

house.

PARTNERSHIP

Moving estate agency on



h.

SEDGWICK PARK HOUSE

Sedgwick Park

Nuthurst

Nr Horsham RH13 6QQ

Sedgwick Park House is the principal portion of this historic Grade II listed, Ernest George Mansion, of approximately 15,400 sq ft, set in about 20 acres of formal gardens and parkland, with southerly views towards Chanctonbury Ring

- Foyer / entrance hall
- Family / piano room / sitting area
- Ballroom / formal reception room
- Kitchen / breakfast / dining room
- Master bedroom suite
- 6 further bedrooms and 5 / 6 further bath / shower rooms
- 3 bedroom guest apartment
- Viewing tower
- Formal gardens and parkland of about 20 acres
- Swimming pool and stunning views



h.



h.



h.



h.



properties perfectly presented

h.



h.



h.



h.

properties perfectly presented



h.

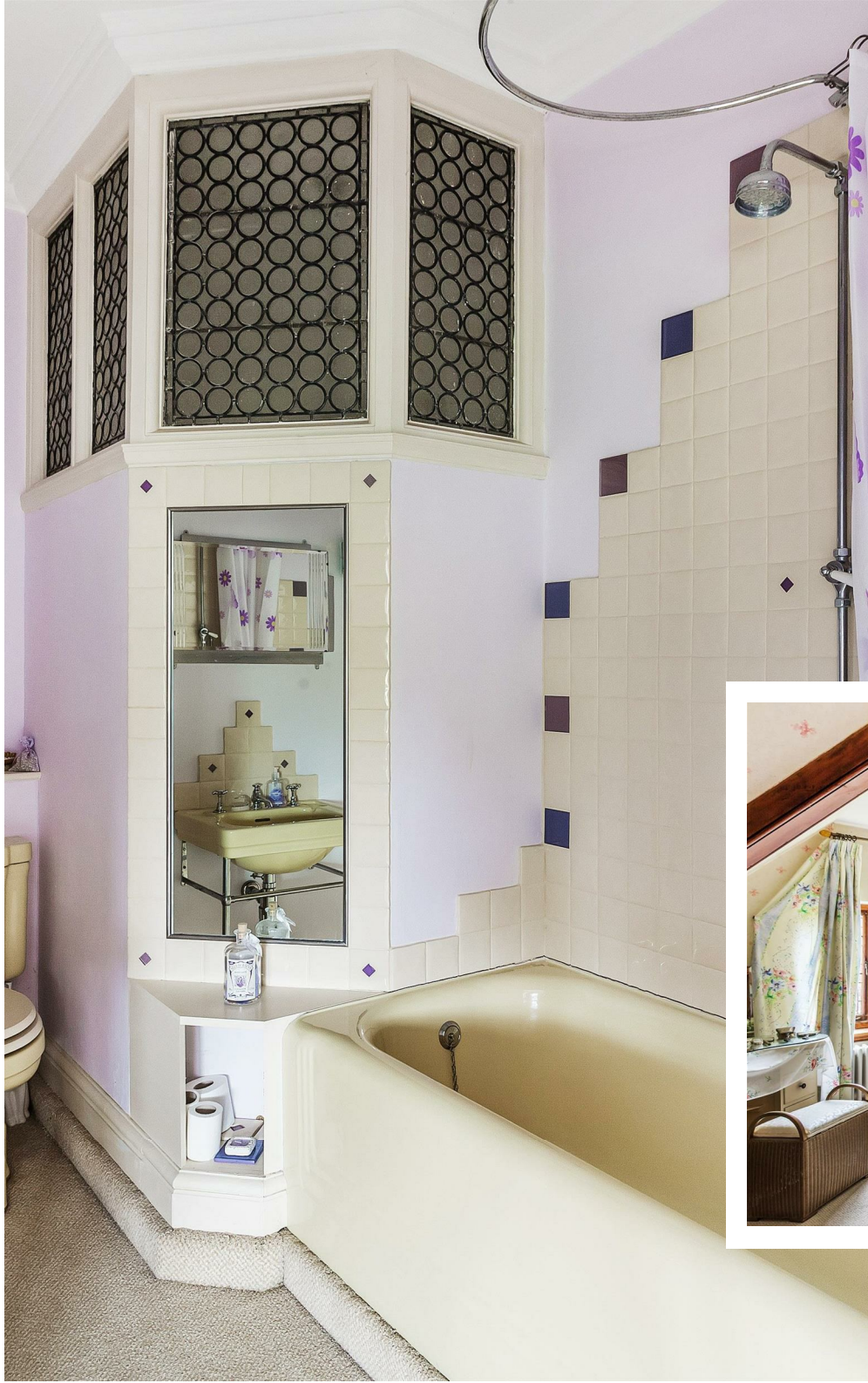


h.

properties perfectly presented



h.



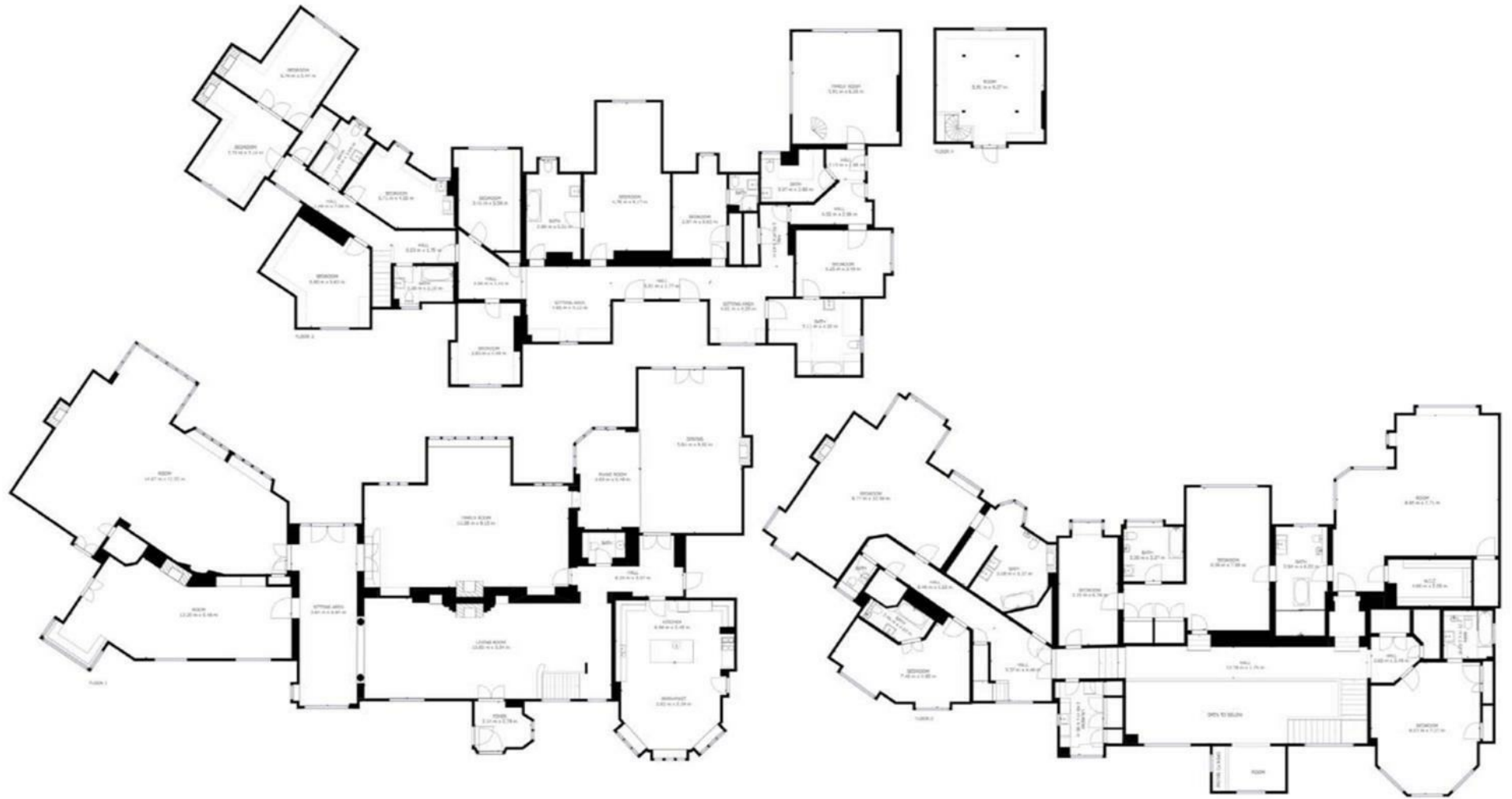
h.



properties perfectly presented



h.



GROSS INTERNAL AREA
FLOOR 1: 526 m², FLOOR 2: 494 m²
FLOOR 3: 389 m², FLOOR 4: 28 m²
EXCLUDED AREAS: , REDUCED HEADROOM BELOW 1.5M: 42 m²
TOTAL: 1437 m²
SIZES AND DIMENSIONS ARE APPROXIMATE. ACTUAL MAY VARY.

h.

HOUSE INFORMATION

Approximate total gross internal area: House
15,400 sq ft / 1,437 sq m.

Services: Mains water and electricity. Oil-fired
central heating. Private drainage.

Local authority: Horsham District Council. Tel :
01403 215100.

Viewing: Strictly by appointment. Tel: 01483
266707.

Additional plots available.



t. 0800 917 0447

w. housepartnership.co.uk

f in p @